

Client: BHJ UK Protein Foods Ltd

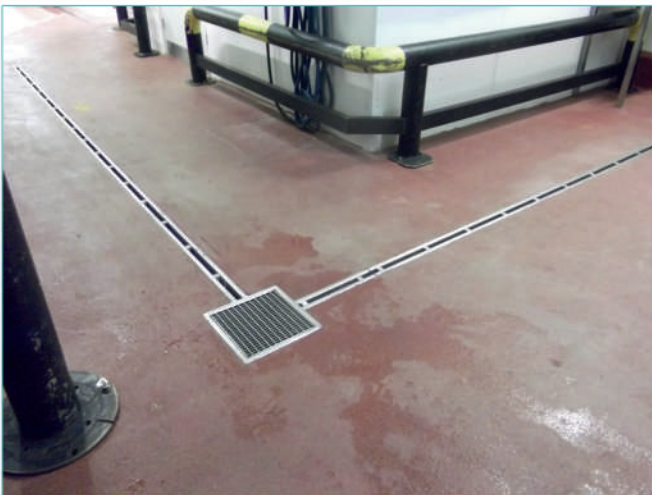
Project: Interior Building Drainage

Component Developments worked alongside Adept Flooring to support BHJ Protein Foods during their renovation work. A team member visited the site twice, to ensure all measurements were accurate, and the products were the best suited for the job.

Component Developments also made sure the mechanical flange joint gasket material was resistant to the chemicals used during the food process, to guarantee a long product life.

Component Developments installed 18m of channel, with reinforced channel shoulders, and a built-in gully, with a removable waste basket, rodding port and odour trap. This meant the channel could be easily cleaned, and the basket emptied which is imperative in the food processing environment, where hygiene is of the utmost importance.

This was then topped with an anti-slip grating which would accommodate the high amount of traffic.



Stainless Steel: Drainage Channels | Gratings | Trapped Gullies | Rodding Eyes | Access Covers | Corner Guards | Crash Rails | Kerbs | Special Fabrications

Accreditations: ISO 9001:2008 Quality Assurance | ISO 14001:2004 Environmental Management | OHSAS 18001:2007 Occupational Health & Safety

Component Developments is a division of Webster-Wilkinson Ltd.

Company Registration No: 892102

Registered Office: Halesfield 10, Telford, Shropshire. TF7 4QP

T: 01952 588488 **F:** 01952 684395

E: enquiries@componentdevelopments.com

W: www.componentdevelopments.com