

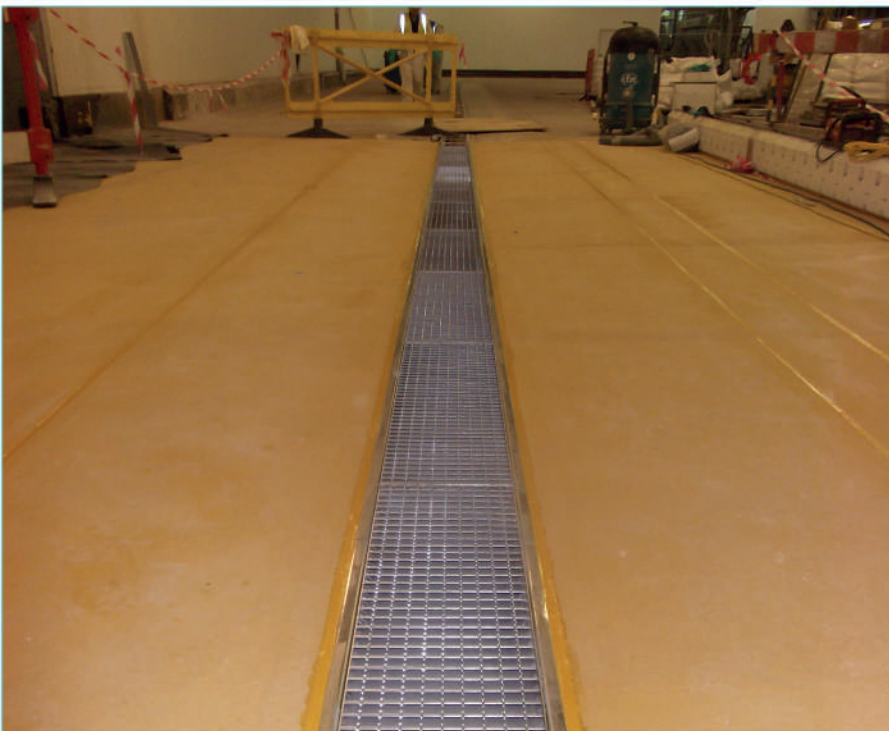
Client: McCain Foods Limited

Project: Interior Building Drainage

Component Developments was approached to design, manufacture and supply stainless steel drainage channels, and surface protection to the McCain's Wombourne food factory.

Component Developments produced a variety of solutions, including stainless steel kerbing to prevent damage to the walls from transportation units, alongside four heavy duty gullies and a large network of bespoke stainless steel channels with numerous branches, outlets and sumps to create an island system designed to accommodate the large amounts of waste-water produced from the factory.

All channels and gullies were topped with our heavy duty anti-slip gratings perfect for forklifts, and other transportation units regularly used in this industry.



Stainless Steel: Drainage Channels | Gratings | Trapped Gullies | Rodding Eyes | Access Covers | Corner Guards | Crash Rails | Kerbs | Special Fabrications

Accreditations: ISO 9001:2008 Quality Assurance | ISO 14001:2004 Environmental Management | OHSAS 18001:2007 Occupational Health & Safety

Component Developments is a division of Webster-Wilkinson Ltd.

Company Registration No: 892102

Registered Office: Halesfield 10, Telford, Shropshire. TF7 4QP

T: 01952 588488

E: enquiries@componentdevelopments.com

W: www.componentdevelopments.com